



I-95/Butler Interchange Under Construction

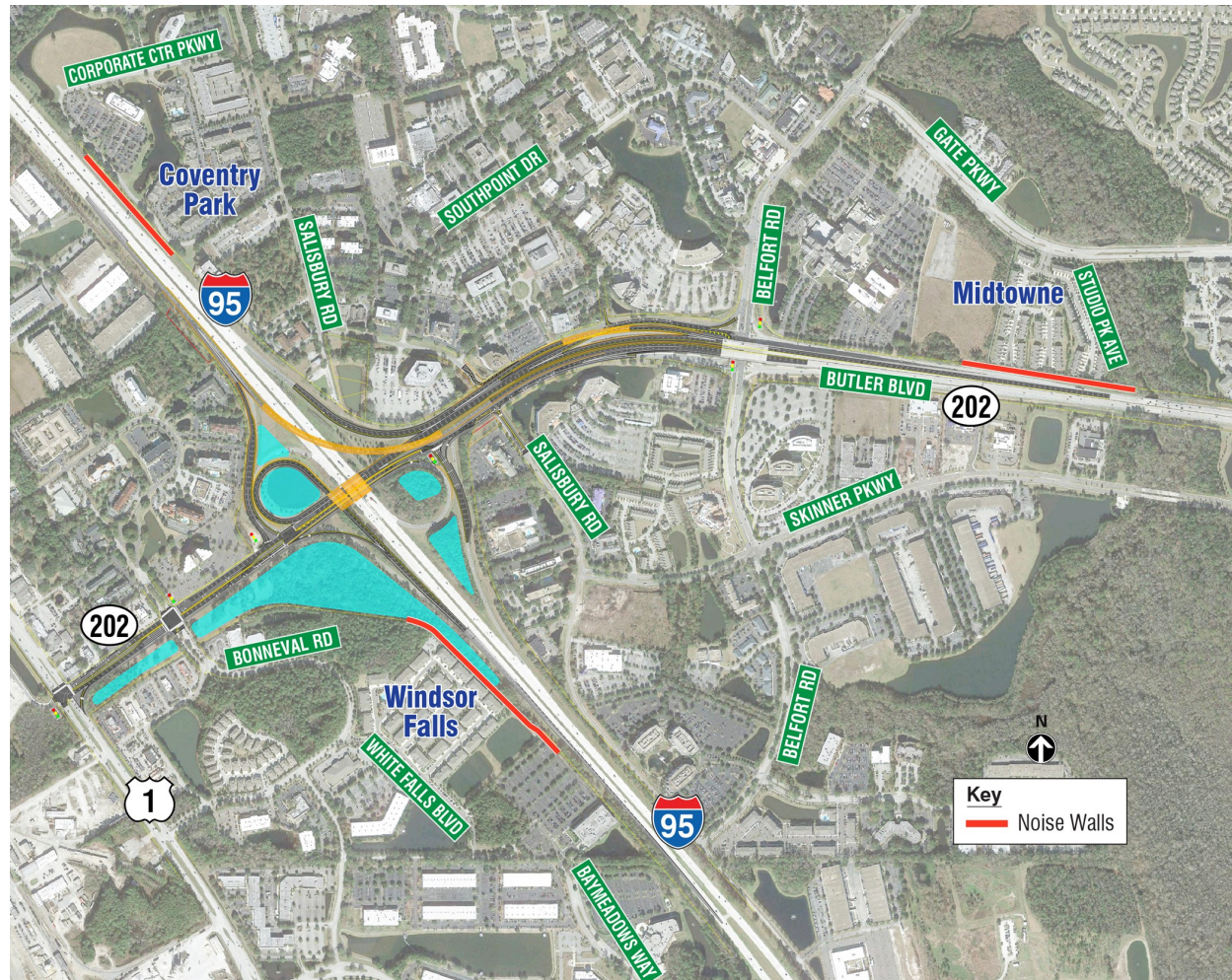


Image above shows the planned location of noise barrier walls.

Phase 1: (began in early 2015)	Clearing property for drainage, utilities and noise wall construction Constructing noise walls Constructing ponds and install drainage structures Widening off-ramp from I-95 southbound to Butler Boulevard Widening on-ramp from Butler Boulevard eastbound to I-95 southbound
Phase 2: (begins in early 2015)	Widen, resurface and install drainage structures on Butler Boulevard between Philips Highway and I-95 Construct loop ramp and overpass from Butler Boulevard westbound to I-95 southbound
Phase 3: (begins in mid-2015)	Widen, resurface and install drainage structures on Butler Boulevard east of I-95 Reconstruct Salisbury Road South Widen and relocate I-95 northbound off-ramp to Butler Boulevard Widen on-ramp from Butler Boulevard westbound to I-95 northbound Reconstruct overpass on I-95 southbound over Butler Boulevard Permanently close access at Salisbury Road North and Butler Boulevard
Phase 4: (begins in 2016)	Construct overpass flyover from I-95 southbound to Butler Boulevard eastbound Construct overpass flyover from Butler Boulevard westbound to I-95 northbound Reconstruct overpass on I-95 northbound over Butler Boulevard Final resurfacing on Butler Boulevard from Philips Highway to Belfort Road

****Work in these phases may overlap.**

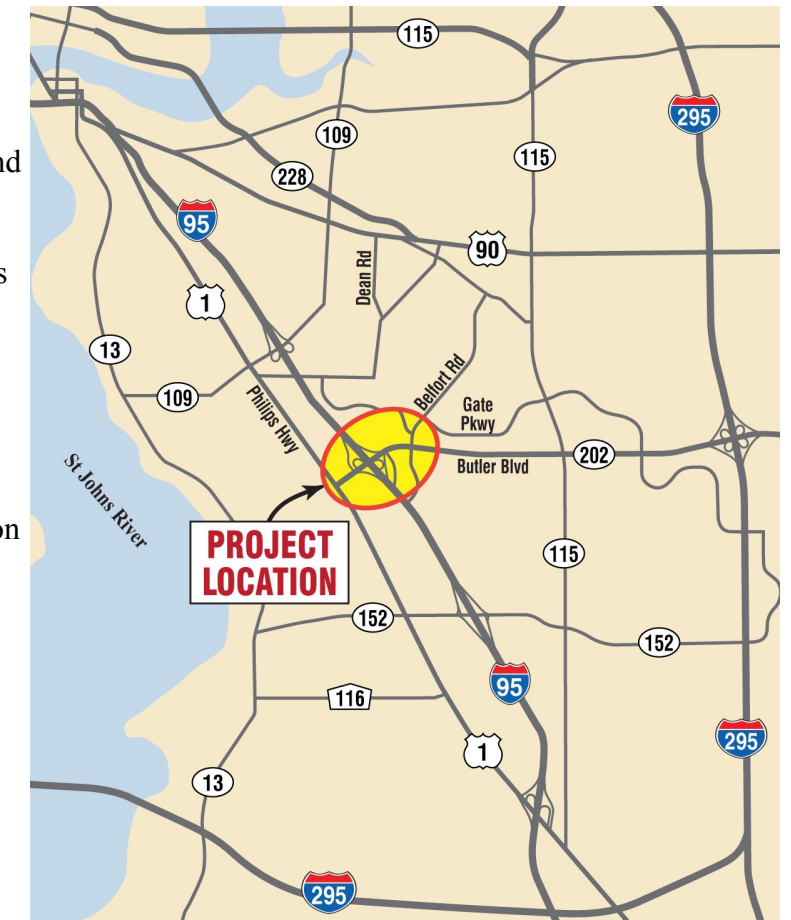
Project Summary:

Florida Department of Transportation (FDOT) is reconstructing the Interstate 95 and Butler Boulevard interchange to improve traffic flow and reduce conflicts, including building new overpasses and access ramps. Governor Scott visited the site in February 2013 to announce this project being accelerated to reduce congestion.

Project Includes:

The interchange reconstruction adds a flyover from southbound I-95 to eastbound Butler Boulevard, which will reduce the current situation where traffic backs up onto I-95. Other enhancements planned at the interchange include:

- Widening and resurfacing Butler Boulevard from Philips Highway to approximately 2800 feet east of Belfort Road.
- Reconstructing the northbound I-95 off-ramp to accommodate travel to both westbound and eastbound Butler Boulevard.
- Building a new overpass to eliminate traffic conflicts on westbound Butler Boulevard at the on-ramp to northbound I-95.
- Permanently closing access to Salisbury Road North from westbound Butler Boulevard.
- Reconstructing the Butler Boulevard and Salisbury Road South intersection to provide a right turn onto Salisbury Road South and allow for a right turn from Salisbury Road South onto eastbound Butler Boulevard. Currently, Salisbury Road South is one-way traffic at Butler Boulevard.
- Replacing traffic signals along Butler Boulevard at Philips Highway, at Bonneval Road and at the I-95 northbound and southbound off-ramps.



Project Contact Information:

Ron Tittle

904-360-5457

Ron.Tittle@dot.state.fl.us

www.nflroads.com/95andButler

Follow FDOT for updates on the project at

http://twitter.com/MyFDOT_NEFL

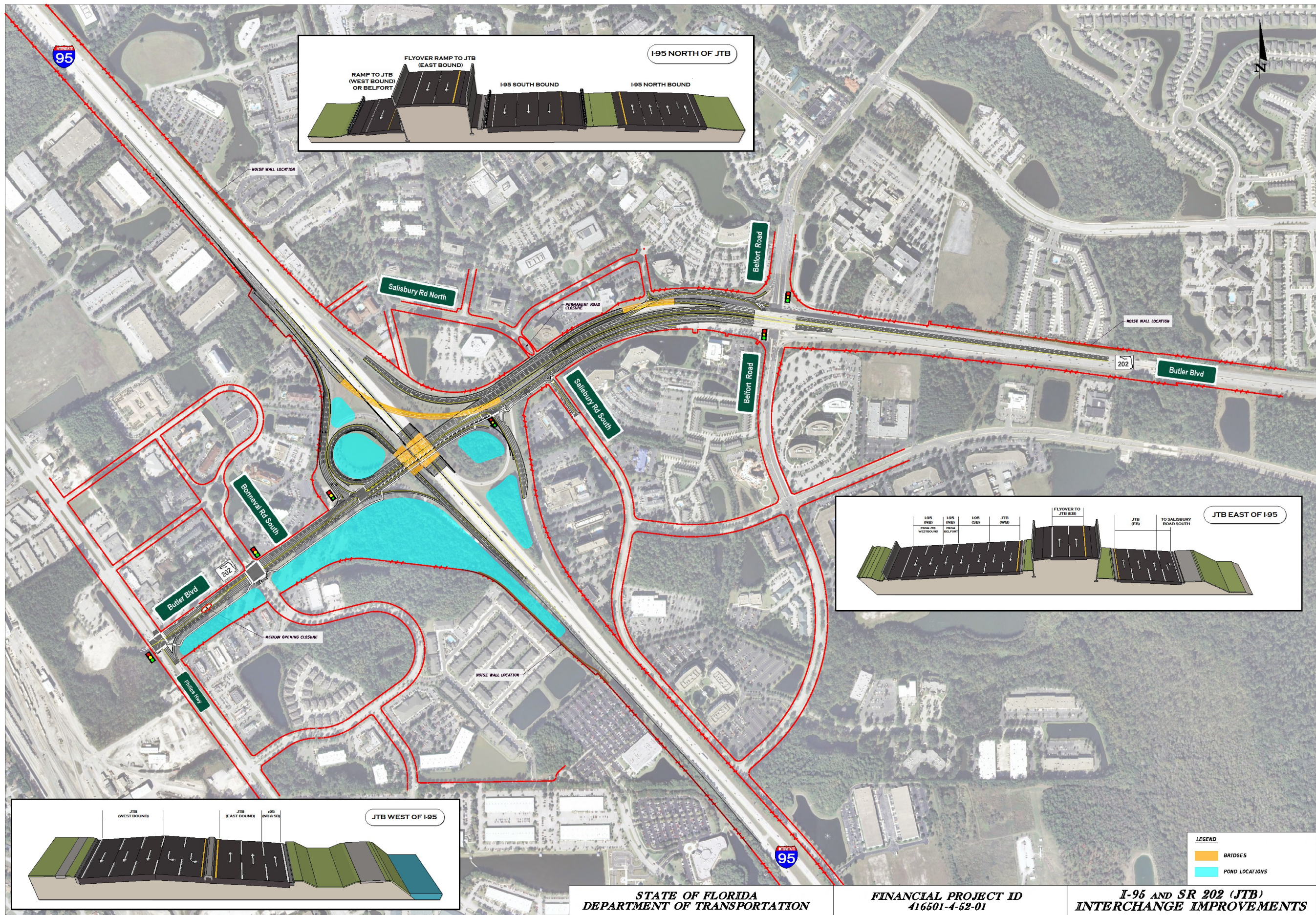
or

@MyFDOT_NEFL

FDOT is also on Facebook:

www.facebook.com/myFDOTNEFL

youtube.com/user/myfdotnefl



Project Facts:

- Start Date: December 2014
- Completion: Spring 2017
- Cost: \$67 million
- Contractor: SEMA Construction

Traffic Impacts:

Nighttime lane closures are scheduled from 8 p.m. to 6 a.m. Detours required during the project are planned between 11 p.m. and 5 a.m.

Notes:

- Pile driving is allowed from 7 a.m. to 7 p.m. weekdays and from 10 a.m. to 7 p.m. Saturdays
- Traffic will be maintained throughout the project
- Minimal detours planned at night for placing overpass beams and overhead signs
- Speed limits may be lowered during certain construction activities